

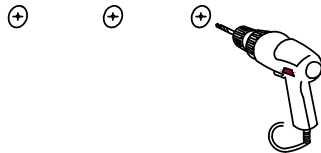
ASSEMBLY INSTRUCTIONS

WALL MIRROR - CARNIVAL INFINTY ITEM 4111717CH/4111717BB

Thank you for purchasing this quality product. Be sure to check all packing material carefully for small parts that may have come loose inside the carton during shipment.

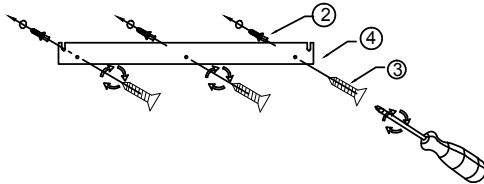
Step 1

Put ANCHOR (2) into the wall by using a power drill.



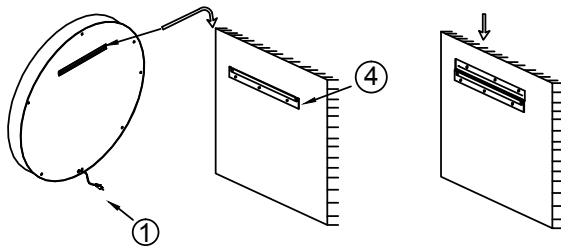
Step 2

Fasten the Z-bar (4) onto wall by 3pcs screws (3) .



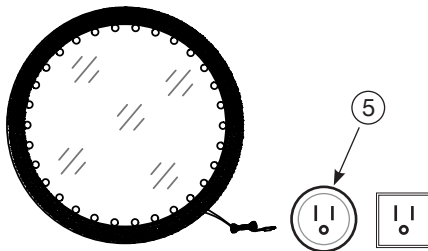
Step 3

Fix the mirror by Z-bar to wall surface.



Step 4

Insert the plug of the mirror into the outlet in the wall.



Step 5

This mirror comes with a smart switch device (enclosed), to install between the mirror cord plug and the wall outlet. Follow the instructions inside the device packaging for setup and installation.

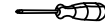
IMPORTANT SAFETY INSTRUCTIONS

This lamp has a polarized plug (one blade is wider than the other) as a safety feature to reduce the risk of electric shock. This plug will fit in a polarized outlet only one way. If the plug does not fit fully in the outlet, reverse the plug. If it still does not fit, contact a qualified electrician. Never use with an extension cord unless the plug can be fully inserted. Do not alter the plug.

IMPORTANTES INSTRUCCIONES DE SEGURIDAD

Esta lámpara tiene un enchufe polarizado (una clavija es más ancha que la otra) como una característica de seguridad para reducir el riesgo de descarga eléctrica. Este enchufe encajará en una toma de corriente polarizada de una sola manera. Si el enchufe no encaja completamente en la toma de corriente, invierta el enchufe. Si aún no encaja, comuníquese con un electricista calificado. Nunca lo use con un cable de extensión a menos que el enchufe pueda insertarse completamente. No altere el enchufe.

TOOL REQUIRED (NOT PROVIDED)



Screw driver



power drill

PARTS LIST

NO.	Description	Sketch	Q'ty
1	Wall Mirror DIA 36"		1 pc

Hardware List

NO.	Description	Sketch	Q'ty
2	Anchor-30mm		3 pcs
3	Screw-Ø4x30mm		3 pcs
4	Z-bar-475mm		1 pc
5	Smart Switch Device		1 pc

Grounding Instructions

This product must be grounded. If it should malfunction or breakdown, grounding provides a path of least resistance for electric current to reduce the risk of electric shock. This product is equipped with a cord having an equipment-grounding conductor and a grounding plug. The plug must be plugged into an appropriate outlet that is properly installed and grounded in accordance with all local codes and ordinances. This product is for use on a 120V circuit and has a grounding plug that looks like the plug in the following figure. Make sure that the product is connected to an outlet having the same configuration as the plug. No adapter should be used with this product.

