

ASSEMBLY INSTRUCTIONS

Marshmallow Mirror

- 1.) Carefully remove all the parts from the box and place down in a flat surface. Clean the area in the wall where the mirror will be hung to.
- 2.) Measure the distance between point A and point B.
- 3.) Mark two holes on the wall, perpendicular to each other with a distance taken from step 2.
- 4.) Drill holes on the marked areas of the wall.
- 5.) For the point A hole, install (x1) wall anchor and (x1) silver screw.
- 6.) For the point B hole, install (x1) wall anchor, (x1) silver screw and (x1) hanger. Make sure the hanger is positioned pointing upwards, as is shown on the diagram C.
- 7.) Hang the mirror by inserting the screw on point A to the hanger already installed on the top of the mirror. Then, align the bottom of the mirror with the thread pointing out to the hanger on point B. Please see diagram D for reference.
- 8.) Install the black screw onto the thread at point B using the included key.

Parts Included:

- (x1) Mirror
- (x1) Key
- (x2) Silver Screws
- (x2) Wall Anchors
- (x1) Hanger
- (x1) Black Screw

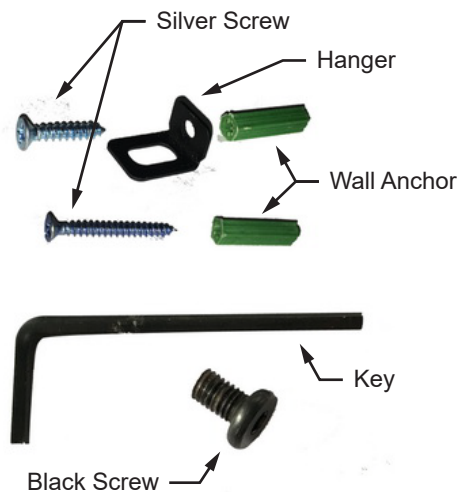


Diagram A

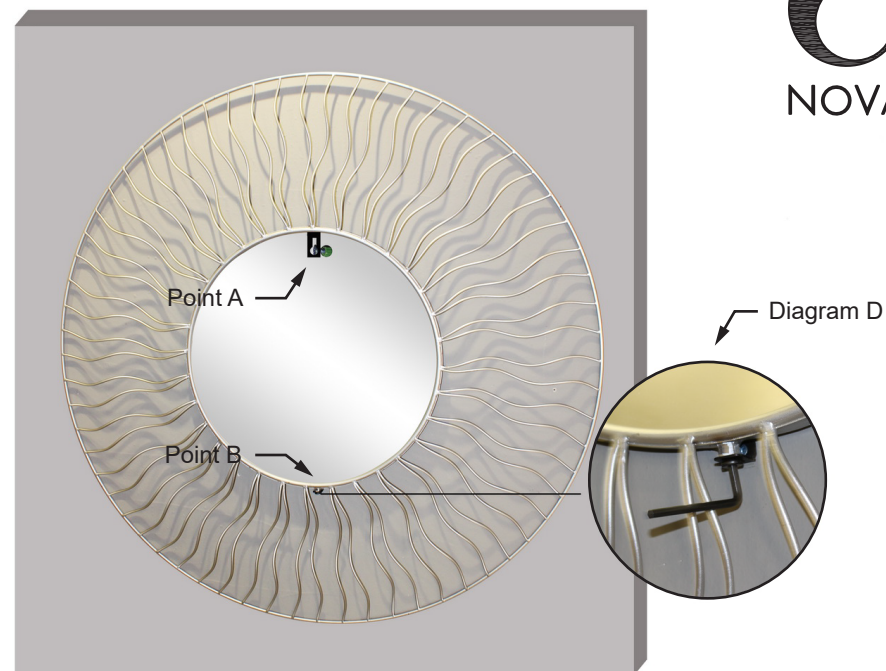


Diagram B

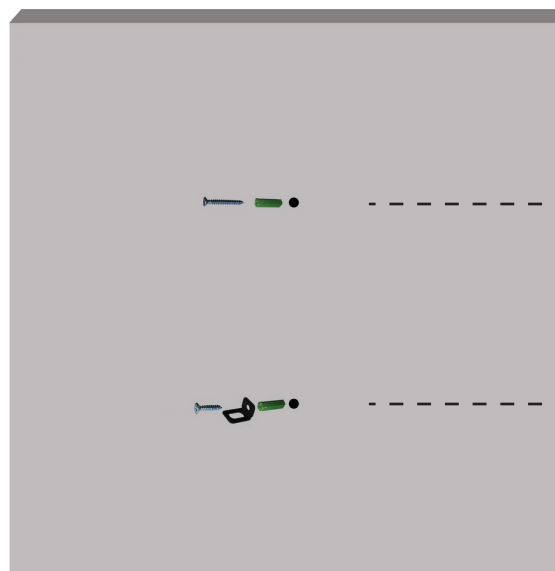


Diagram C

